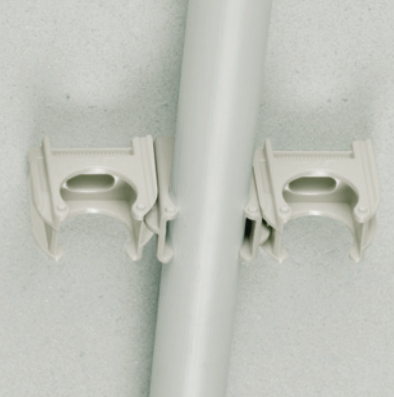




Export product list 2018

Fastening Systems for conduit-, cable- and recessed installations,
for installations in drywall, hollow brick, concrete and insulated ceilings

Issue 01/2018



60%
TIME SAVING
WITH SCHNABL

TÜV
AUSTRIA



Quality works | www.schnabl.works

 **Schnabl®**
time saving products

Drill. Fasten. Finish!

Save up to 60% of your working time

No anchors, no screws!

The basic principle of Schnabl fastening technology is that the fastening elements can be inserted **without a tool and with very little effort** into a 6 mm drill hole.

Utilising the special – eccentric – design of the expansion element when under tension, the fastening elements are securely retained in place and will thus withstand any working load seen in normal conditions.

Schnabl products can withstand torque forces up to 40 kg. The expansion elements create a friction connection with the borehole wall thereby enhancing the retention force with an increase in the load.

The world leader!

As the world leader in the area of plug applications for electro installation Schnabl is constantly analyzing the work flow and develops timesaving products that help our customers to maximize the profits.

Our lineup consists of more than 200 products. This includes the universal Euroclip clamp, cable holders, clamps for buried installations and tailor made solutions for cable installation on conduits.

Our **uncompromising claim on quality** with our products guarantees 100% customer satisfaction.

Saving 60% of your working time!

Schnabl took the opportunity to prove their efficiency. Under the monitoring of TÜV Austria, the work rate of conduit installation on identical parts of a building project were analyzed.

The result of this time comparison of Schnabl with traditional installation methods: **Schnabl showed a clear advantage** at the in wall and the on wall installation. Watch your video to time comparison. Just scan the QR-Code with your smart-phone.

The benefits of Schnabl clips:

- Multiple installation capacity: simply drill and fasten
- Only one drill diameter (Ø 6 mm) for all Schnabl clips
- Fastening elements for conduits and cables, recessed and drywall
- Fastening on insulated ceilings and walls
- Torque forces up to 40 kg
- No rusting parts
- Temperature range from -20 to +85 °C
- UV-stabilised and halogen-free
- 960 °C filament also tested if desired
- Tested by KEMA, TÜV and by the 'Institut für Kunststofftechnik'



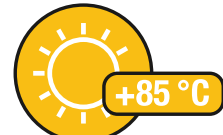
60% TIME SAVING WITH SCHNABL

TÜV AUSTRIA

POWERED BY **Schnabl**
www.schnabl.works

Video Time Comparison. Just scan the QR-Code with your smart-phone or visit us: www.schnabl.works

TÜV
AUSTRIA



Areas of applications at a glance

The right Schnabl product for every installation

Conduit installation

Conduit clips and accessories
Conduit clips onto steel structures
Single and double clips

Page 4–8
Page 9
Page 10



Cable installation

Clips for sheathed cables
Dowel fastening nail for mounting cable ducts
Metal fastening elements for the functional integrity
Fastening elements for aligned installation of sheathed cables
Terrace installation system for sheathed cables

Page 11–12
Page 12
Page 13
Page 14–15
Page 16



Surface- and recessed installation

Section installation system for recessed hoses with no plastering
Recessed clips for flexible conduits with no plastering

Page 16
Page 17–18



Installation in drywall

Clips and fastening elements for drywall

Page 19



Special applications

Fastenings on insulated ceilings and walls
Accessories for conduit clips
Mounting of junction boxes
Fixing conduits to wire mesh in concrete ceilings
Special application for the recessed installation
Drilling in hollow building blocks, ceramic tiles, glass

Page 20
Page 20
Page 21
Page 21
Page 21
Page 21



Special information

Tips and Tricks
Breaking loads, recommended installation spacing
Schnabl products at a glance

Page 22
Page 22
Page 23



Conduit installation

Conduit clips and accessories

EC Euro-Clip

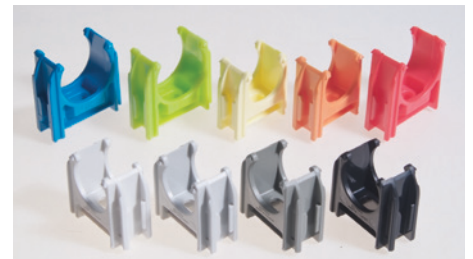
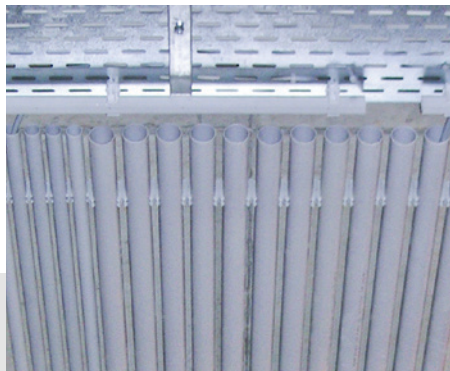
For mounting conduits of different dimensions on all surfaces.

Material halogen-free HO, ABS, UV-stabilised, temperature range: -20 to +85 °C

IEC / EN 61386-1:2008, IEC / EN 61386-25:2011 tested

Production in special colours upon request

Type	Article number			Insulation conduit Ø mm	Content Pack/Box
	light grey	grey	black		
EC 16 HO	31020	31021	31024	16	100 / 3,200
EC 20 HO	31080	31081	31084	20	100 / 2,400
EC 25 HO	31120	31121	31124	25	100 / 2,000
EC 32 HO	31160	31161	31164	32	50 / 1,600
EC 40 HO	31200	31201	31204	40	50 / 1,100
EC 50 HO	31220	31221	31224	50	50 / 700



Thanks to the functional clip system, several EC Euro-Clips can be clipped together in various sizes. A production in many special colours is possible.

SC Clip for shooting

For mounting conduits on concrete walls and ceilings by using a shooting tool.

Material halogen-free HO, PP, UV-stabilised, temperature range: -10 bis +85 °C

Type	Article number	Insulation conduit Ø mm	Colour	Content Pack/Box
SC 19-20 HO	31400	19-20	light grey	100 / 2,400



Put the SC to the muzzle of the shooting tool so that it does not fall off and then fasten the SC clip to the surface as described in the user manual of the shooting tool.



On both sides of the SC an EC Euro-Clip can be added easily by hand. With only one shot, up to three conduit lines can be mounted.



Conduit installation

Conduit clips and accessories

UVB Universal clamping bracket

With UVB, even conduits with heavy cable bundles are held securely in the EC Euro-Clip.

Material halogen-free HO, ABS, UV-stabilised, temperature range: -20 to +85 °C
IEC / EN 61386-1:2008, IEC / EN 61386-25:2011 tested

Type	Article number			suitable for EC	Content Pack/Box
	light grey	grey	black		
UVB 16 HO	34020	34021		16	100 / 7,200
UVB 20 HO	34080	34081		20	100 / 6,000
UVB 25 HO	34120	34121		25	100 / 3,600
UVB 32 HO	34160	34161		32	50 / 2,100
UVB 40 HO	34200	34201	34204	40	50 / 1,500
UVB 50 HO	34220	34221	34224	50	50 / 1,000



With UVB, even conduits with heavy cable bundles are held securely in the EC Euro-Clip.

FC Flexi-Clip™

The flexible, millimeter-accurate way of conduit mounting on all surfaces.

Each type is suitable for at least two conduit sizes.

Material halogen-free HO, PP, UV-stabilised, temperature range: -10 bis +85 °C
IEC / EN 61386-1:2008, IEC / EN 61386-25:2011 tested

Type	Article number	Colour	Content Pack/Box
FC 16-20 HO	33310	light grey	100 / 3,000
FC 20-25 HO	33320	light grey	100 / 2,000
FC 25-32 HO	33330	light grey	100 / 1,200
FC 32-40 HO	33340	light grey	50 / 800
FC 40-50 HO	33350	light grey	50 / 500



For mounting conduits on concrete and drywall the FC Flexi-Clip™ is connected to the ESD-System, for mounting on cable trays it is connected to the EDV or ESV. The FC Flexi-Clip™ can also be fastened by using a screw.

Conduit installation

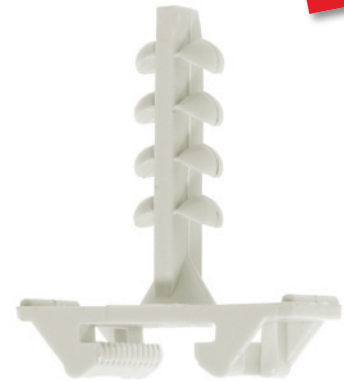
Conduit clips and accessories

ESD Euro-fastening anchor

The ESD is the “clip on” fixing for the Schnabl EC Euro-Clip and FC Flexi-Clip™.

Material halogen-free HO, PA 6, UV-stabilised, temperature range: -20 to +85 °C
IEC / EN 61386-1:2008, IEC / EN 61386-25:2011 tested

Type	Article number			Length Ø mm	Content Pack/Box
	light grey	grey	black		
ESD 11 HO	31280			11	200 / 10,800
ESD 30 HO	31300	31301	31304	27	100 / 4,800
ESD 45 HO	31320	31321		42	100 / 3,000
ESD 80 HO	31340	31341		80	50 / 1,800



MADE IN AUSTRIA

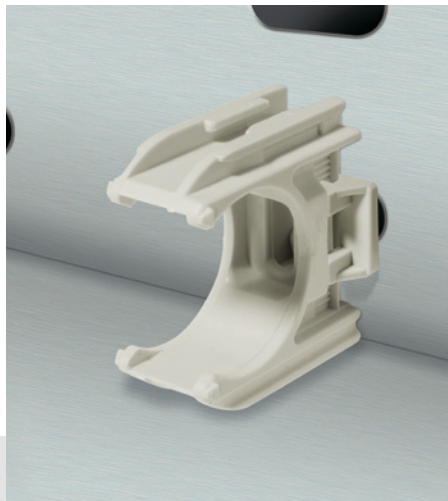
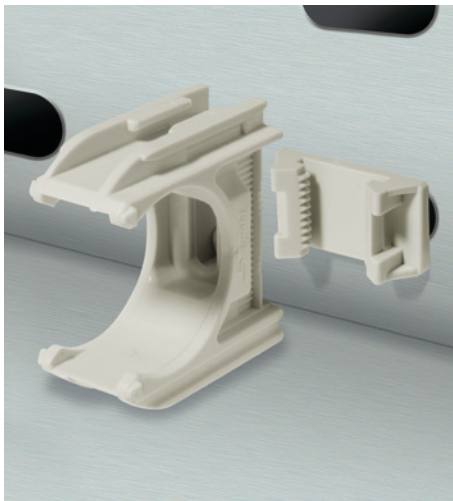
The perfect combination: ESD Euro-fastening anchor and EC Euro-Clip for efficient conduit laying.

EDV Euro twist-on connection

For the installation of conduits on all cable trays with slotted holes with a sheet thickness from 0.5 to 1.1 mm.

Material halogen-free HO, PA 6, UV-stabilised, temperature range: -20 to +85 °C
IEC / EN 61386-1:2008, IEC / EN 61386-25:2011 tested

Type	Article number	Colour	Content Pack/Box
EDV HO	31430	light grey	200 / 3,000



MADE IN AUSTRIA

Ideal for fixing conduits to all conventional cable conduits with slotted holes.

Conduit installation

Conduit clips and accessories

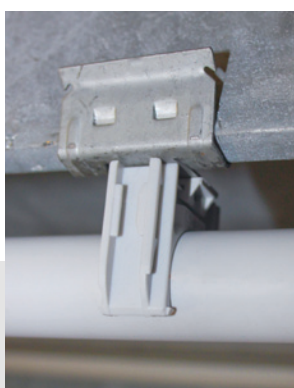
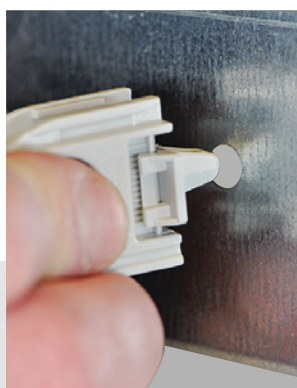
ESV Euro connector lock

For the installation of conduits on all cable trays
with round holes with a sheet thickness from 0.5 to 1.1 mm.

Material halogen-free HO, PA 6, UV-stabilised, temperature range: -20 to +85 °C
IEC / EN 61386-1:2008, IEC / EN 61386-25:2011 tested

Type	Article number	Colour	Content Pack/Box
ESV HO	34430	light grey	200 / 3,000

MADE IN AUSTRIA



Ideal for fixing conduits to all conventional cable conduits with round slotted holes.

The ESV Euro connector lock can be attached to beam clamps as well.

SGC Schnabl thread clip

For fastening conduits on M8-M10 threaded rods in combination with the EC Euro-Clip.

Material halogen-free HO, PP, UV-stabilised, temperature range: -10 to +85 °C

Type	Article number	Ø of Threaded rods	Colour	Content Pack/Box
SGC HO	31460	M8-M10	light grey	100 / 3,500

MADE IN AUSTRIA



The new SGC thread clip enables not only the parallel laying of conduits on a threaded rod, but is also suitable for laying at right angle.

Conduit installation

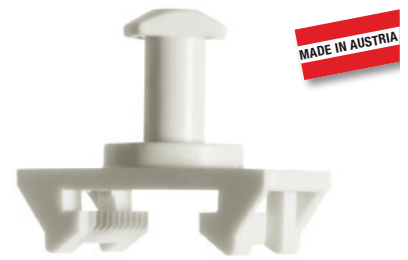
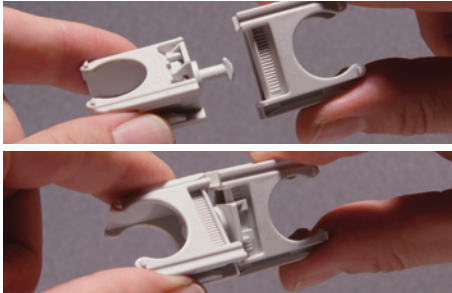
Conduit clips and accessories

ECV Euro clip connector

For the connection of two EC Euro-Clips.

Material halogen-free HO, PA 6, UV-stabilised, temperature range: -20 to +85 °C

Type	Article number	Colour	Content Pack/Box
ECV HO	31560	light grey	200 / 3,000



With the ECV you can easily connect two Euro-Clips to add additional conduits in narrow spaces.

ESP Euro shooting plate

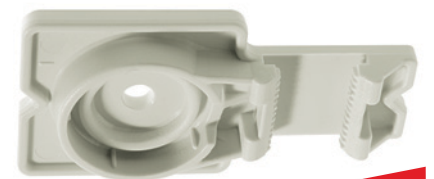
For conduit and cable laying – in conjunction with the EC Euro-Clip system – with the help of a shooting tool. The two rings of the ESP are matched to the shooting tools from Hilti, Spit and Würth (Art. nr.: 0864 90).

Material halogen-free HO, PA 6, UV-stabilised, temperature range: -20 to +85 °C

IEC / EN 61386-1:2008, IEC / EN 61386-25:2011 tested

Cable tie feedthrough up to max. 4.5 mm

Type	Article number	Colour	Content Pack/Box
ESP HO	31440	light grey	100 / 2,000



The ESP is suitable for shooting tools from Hilti, Spit and Würth (Art. nr.: 0864 90). It sticks to the mouth of the shooting tool from these manufacturers leaving your hands free for mounting.

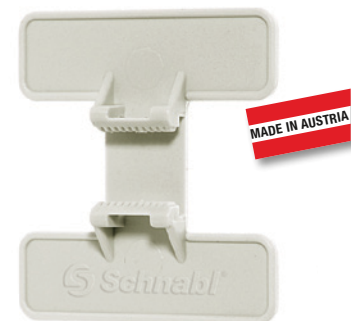
EKP Euro adhesive pad

For fastening electrical lines on all surfaces where drills and screws cannot be used, e.g. on steel structures or corrugated sheets.

Material halogen-free HO, PA 6, light grey, UV-stabilised, temperature range: -20 to +85 °C

Type	Article number	Length x width mm	Torque values*	Content Pack/Box
EKP HO	31360	38 x 35	20 kg	100 / 3,000

* All torque values are averages and can considerably deviate caused by different influences, e.g. condition of wall or ceiling, glue, etc.



The EC Euro-Clip can also be mounted on steel structures or drywall using the EKP Euro adhesive plate.

Conduit installation

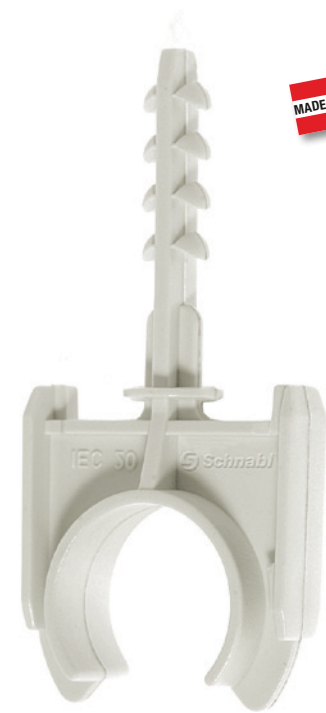
Conduit clips and conduit clips onto steel structures

AKS Distance gripper clamp

For retaining single conduits with a fixed distance from the wall with the least effort and greatest time efficiency.

Material halogen-free HO, PA 6, UV-stabilised, temperature range: -20 to +85 °C
IEC / EN 61386-1:2008, IEC / EN 61386-25:2011 tested

Type	Article number		Insulation conduit Ø mm	Content Pack/Box
	light grey	grey		
AKS 16 HO	30740	30741	16	200 / 4,800
AKS 20 HO	30800	30801	20	200 / 3,200
AKS 25 HO	30840	30841	25	100 / 2,200
AKS 32 HO	30880	30881	32	100 / 2,000
AKS 40 HO	30900	30901	40	50 / 1,400
AKS 50 HO	30920	30921	50	50 / 750



Should conduits have a set distance to the wall, then the AKS Distance gripper clamp is the way ahead!
Can be mounted both ways with every Schnabl Euro-Clip. You only need one drill hole.

RK Conduit claw

For conduit laying onto steel structures.

Material spring band steel, galvanized, corrosion-resistant

Type	Article number	Clamping range conduit dimension mm	Thickness of steel beams mm	Content Pack/Box
RK 16/1	9032	15-19	2-4	100 / 3,600
RK 20/1	9034	20-24	2-4	100 / 3,000
RK 25/1	9036	25-32	2-4	100 / 2,000
RK 16/4	9038	15-19	4-7	100 / 3,200
RK 20/4	9040	20-24	4-7	100 / 2,800
RK 25/4	9042	25-32	4-7	100 / 2,000
RK 16/8	9044	15-19	8-12	100 / 2,600
RK 20/8	9046	20-24	8-12	100 / 2,400
RK 25/8	9048	25-32	8-12	50 / 1,500



The RK Conduit claw is attached to loose conduits to steel beams by means of a simple insertion.

Conduit installation

Single- and double clips

ESS Single fastening clamp

For conduit installation, without wall distance, for example on ceilings and under concrete.

Material halogen-free HO, PP, UV-stabilised, temperature range: -10 to +85 °C

* IEC / EN 61386-1:2008, IEC / EN 61386-25:2011 tested

Type	Article number	Clamping range mm	Colour	Content Pack/Box
ESS 16-20 HO*	30120	16-20	light grey	200 / 4,400
ESS 20-25 HO*	30140	20-25	light grey	200 / 3,200
ESS 25-32 HO*	30160	25-32	light grey	100 / 2,400
ESS 32-42 HO	30180	32-42	light grey	100 / 1,600



The product for quick installation of conduits onto plaster the ESS Single fastening clamp from Schnabl.



DSS Double fastening clamp

For the parallel laying of two conduits without wall distance.

Material halogen-free HO, PP, UV-stabilised, temperature range: -10 to +85 °C

IEC / EN 61386-1:2008, IEC / EN 61386-25:2011 tested

Type	Article number	Colour	Content Pack/Box
DSS 20-25 HO	30240	light grey	200 / 4,000
DSS 25-32 HO	30250	light grey	100 / 2,400



One borehole is also enough for two conduits – with the DSS Double fastening clamp from Schnabl.



DSA Double fastening clamp with spacer

For the parallel laying of two conduits without wall distance; with fixed distance between the conduits.

Material halogen-free HO, PP, UV-stabilised, temperature range: -10 to +85 °C

IEC / EN 61386-1:2008, IEC / EN 61386-25:2011 tested

Type	Article number	Clamping range mm	Colour	Content Pack/Box
DSA 20-25 HO	30260	20-25	light grey	100 / 2,400
DSA 25-32 HO	30270	25-32	light grey	100 / 1,600



The practical DSA Double fastening clamp is also available with a fixed conduit distance.



Cable installation

Clips for sheathed cables

DKS Dowel clamp

For the installation of single cables and cable bundles, such as antenna cables, telephone lines, etc.

Material halogen-free HO, PP, UV-stabilised, temperature range: -10 to +85 °C
Production in special colours upon request.

Type	Article number			Clamping range mm	Content Pack/Box
	light grey	white	black		
DKS 3-13 HO	30020	30023	30024	3-13	200 / 7,200
DKS 6-20 HO	30030	30033	30034	6-20	200 / 4,800
DKS 8-28 HO	30040	30043	30044	8-28	200 / 6,000
DKS 20-40 HO	30060	30063	30064	20-40	200 / 4,000



Good cable tension options with the DKS. When laid, the strap is barely visible.



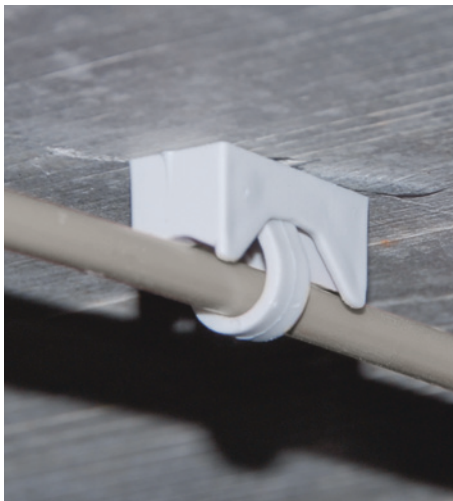
MADE IN AUSTRIA

FS Fixing mounting base

In combination with the DKS for the laying of single cables with wall distance.

Material halogen-free HO, PP, UV-stabilised, temperature range: -10 to +85 °C

Type	Article number	Colour	Content Pack/Box
FS HO	30080	light grey	200 / 6,000



With the FS Fixing mounting base in connection with the DKS Dowel clamp, the effortless mounting of thermal conduction cables with a fixed distance of 8 or 15 mm to the ceiling is possible.



MADE IN AUSTRIA

Cable installation

Clips for sheathed cables · Dowel fastening nail for mounting cable ducts

DSS Double fastening clamp

For the parallel laying of two cables without wall distance.

Material halogen-free HO, PP, UV-stabilised, temperature range: -10 to +85 °C

Type	Article number	Clamping range mm	Colour	Content Pack/Box
DSS 10 HO	30220	4-12	light grey	200 / 7,200



One borehole is also enough for two cables – with the double fastening clamp from Schnabl.



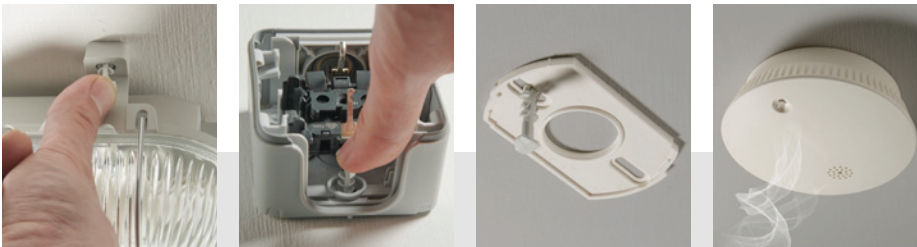
MADE IN AUSTRIA

DSN Dowel fastening nail

Dowel fastening nail for fixing cable trunking, for smoke detectors and small lamps.

Material halogen-free HO, PA 6, UV-stabilised, temperature range: -20 to +85 °C

Type	Article number	Nail length mm	Colour	Content Pack/Box
DSN 30 HO	30320	31	light grey	200 / 10,800
DSN 40 HO	30340	40	light grey	200 / 7,200
DSN 50 HO	30360	49	light grey	200 / 6,000



With the DSN 30 und DSN 40 you will successfully fasten fire detectors, lamps and sockets „at the push of a thumb“.



MADE IN AUSTRIA

SD Plug-in dowel nail

For the fastening of cable bundles in concrete and brick walls, especially for temporary installation, by using cable ties up to 9 mm width.

Material halogen-free HO, PP, UV-stabilised, temperature range: -10 to +85 °C

Type	Article number	Colour	Content Pack/Box
SD 30 HO	32030	light grey	100 / 4,000



A cable tie and a SD Plug-in dowel nail are sufficient for mounting a bundle of cables.



MADE IN AUSTRIA

Metal fastening elements

Dowel fastening nail, ceiling nail and setting tool for the functional integrity

MDSN Metal dowel fastening nail

The patented fastening solution for fire proof installations. For mounting fire resistant clips and cable holders according to DIN 4102-12 and everywhere, where plastic fasteners may not be used.

Material stainless steel W-No.: 1.4310, material thickness: 0.3 mm, maximum thickness of fastening element: 10 mm



Type	Article number	Nail length mm	Content Pack/Box
MDSN	9002	36	100 / 3,900



The patented mounting solution for the functional integrity. Fire proof plug-in dowel for the fixing of electrical installations. No tools needed!

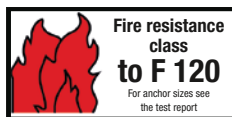
MND Ceiling nail

The MND 6-45 is suitable for fastening electrical lines and equipment incl. fire resistant cable clips, cable brackets and cable holders according to DIN 4102-12, but also for mounting other parts up to 5 mm thickness.

Steel HX420LAD Z100 zinc coated



Type	Article number	Nail length mm	Content Pack
MND	9003	45	100



The MND Ceiling nail expands, no need to hold the fixing. This saves up to 15% working time for mounting.

Setting tool for MND

For mounting of metal cable holders with the MND dowel nail. The setting tool MND can be used with any hammer drill with SDS Plus coupling.

Material metal C45, 1.0503

Type	Article number	Weight in kg	Content Pack
Setting tool for MND	9903	0.277	1



Easy fastening! Insert the setting tool sideways into the metal cable holder, fix and drive in the MND.



Cable installation

Fastening elements for aligned installation of sheathed cables

KB Cable bracket

For aligned installation of plastic-sheathed cables.

Material halogen-free HO, PP, UV-stabilised, temperature range: -10 to +85 °C



Type	Article number	Capacity*	Colour	Content Pack	Content Box
KB 10 HO	30420	max. 11	light grey	50	1,000
KB 20 HO	30440	max. 22	light grey	25	600

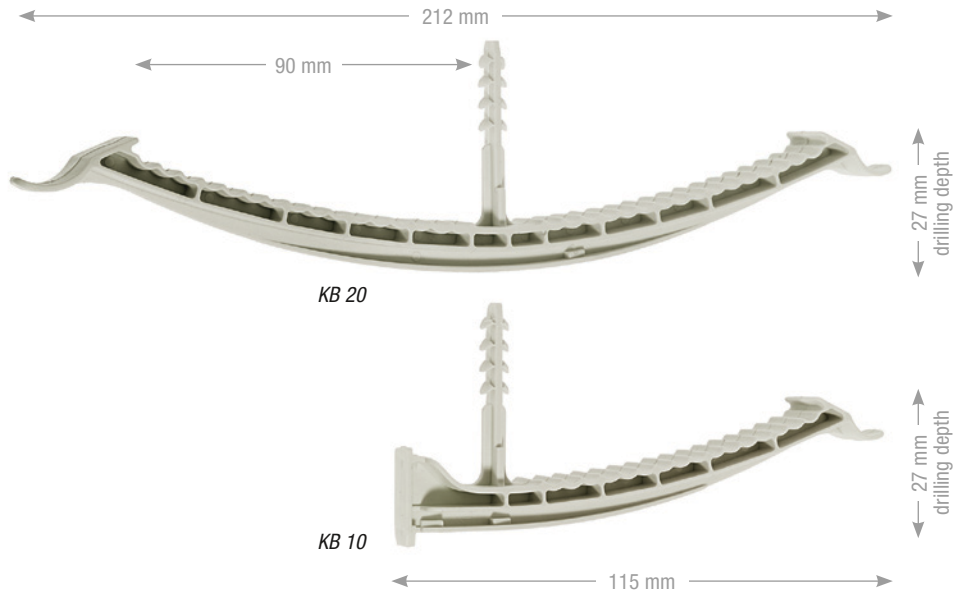
* based on NYM 3 x 1.5 mm²



KB Cable brackets were developed for aligned installations of cable bundles.



An additional EC Euro-Clip for conduit installation can be mounted at the center of the KBS.



KBS Cable bracket for shooting

For the aligned installation of plastic-sheathed cables using common direct shooting fastening systems. The KBS is adapted to the shooting tools from Hilti, Spit and Würth (Art. nr.: 0864 90).

Material halogen-free HO, PP, UV-stabilised, temperature range: -10 to +85 °C



Type	Article number	Capacity*	Colour	Content Box
KBS 20 HO	30460	max. 22	light grey	100 / 500

* based on NYM 3 x 1.5 mm²



Of course the possible combination between EC Euro-Clips and KB Cable bracket is given.

Cable installation

Fastening elements for aligned installation of sheathed cables

SH Cable holder

For the multiple carrying of up to 50 plastic-sheathed cables with Ø 10 mm.

Material halogen-free HO, PP, UV-stabilised, temperature range: -10 to +85 °C



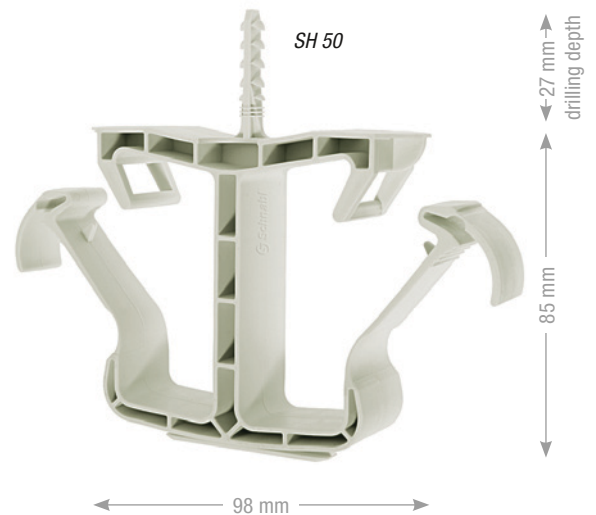
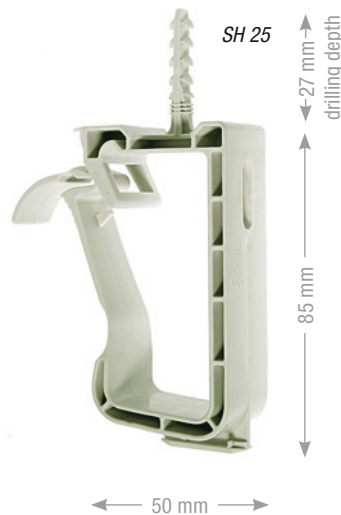
Type	Article number	Capacity*	Colour	Content Box
SH 25 HO	30520	max. 25	light grey	150 / 400
SH 50 HO	30540	max. 50	light grey	70 / 200

* based on NYM 3 x 1.5 mm²



The SH Cable holder forms a closed ring around the plastic-sheathed cables and can be re-opened using a handle.

Up to two EC Euro-Clips of different dimensions for conduit installation can be mounted.



SHS Cable holder for screws

For the multiple carrying of up to 25 cables with Ø 10 mm. The SHS is designed for materials in which the plug-in technology doesn't work.

Material halogen-free HO, PP, UV-stabilised, temperature range: -10 to +85 °C



Type	Article number	Capacity*	Colour	Content Box
SHS 25 HO	30560	max. 25	light grey	150

* based on NYM 3 x 1.5 mm²



By using a screw the SHS can be easily fastened on metal or wood. The SHS forms a closed ring around the cables and can be re-opened using a handle.

Cable-, surface- and recessed installation

Terrace installation system for recessed sheathed cables and hoses

TAP Support anchor panel for TA 30 and TA 100

For laying cable on surfaces such as metal, wood or plaster by simply screwing the TAP Support anchor panel to the surface, for holding the TA Support anchor and TB Terrace bracket.

Material halogen-free HO, PP, UV-stabilised, temperature range: -10 to +85 °C

Type	Article number	Length x width mm	Colour	Content Pack/Box
TAP 1 HO	33250	35 x 35	light grey	100 / 3,000
TAP 2 HO	33230	35 x 16	light grey	100 / 9,000



TAP 1



TAP 2

MADE IN AUSTRIA

Enables the installation of cables onto metal and wood using TA and TB.

Surface- and recessed installation · Terrace installation system for tubes on and under plaster

TA Support anchor for TB 10 and TB 20

For fastening cables, flexible tubing and conduits, on and under plaster.

Material halogen-free HO, PA 6, light grey, UV-stabilised, temperature range: -20 to +85 °C

Type	Article number	Shaft length mm	Dowel length mm	Content Pack/Box
TA 30 HO	33110	30		100 / 8,000
TA 100 HO	33120	100		100 / 3,600
TA 30/25 HO	33130	30	25	100 / 5,400
TA 100/25 HO	33170	100	25	100 / 2,400
TA 30/55 HO	33150	30	55	100 / 3,000
TA 100/55 HO	33190	100	55	100 / 1,600



MADE IN AUSTRIA

TB Terrace bracket for locking on to TA

The TB provides a secure hold even with different conduit dimensions. Fast cable placement without plastering.

Material halogen-free HO, POM, UV-stabilised, temperature range: -20 to +100 °C

Type	Article number	Clamping range mm	Colour	Content Pack/Box
TB 10 HO	33050	100	light grey	50 / 1,000
TB 20 HO	33080	200	light grey	25 / 600



MADE IN AUSTRIA

With the TB in two sizes, Schnabl has a system for all requirements – on or under drywall. Safe hold – even with different conduit dimensions!

Recessed installation

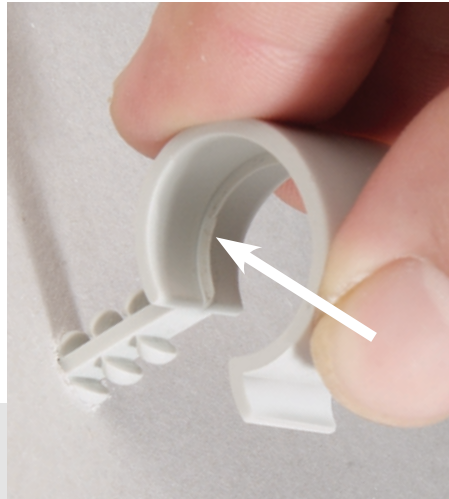
Recessed clamps for conduits without plastering

USE Recessed clamp single

For the simple laying of flexible conduits without plastering (on concrete, hollow brick, plaster walls, aerated concrete).

Material halogen-free HO, PP, light grey, temperature range: -10 to +85 °C

Type	Article number	Clamping range conduit dimension mm	Dowel length mm	Content Pack/Box
USE 16-20/55 HO	12110	16-20	55	100 / 3,200
USE 20-25/55 HO	12120	20-25	55	100 / 2,400
USE 25-32/55 HO	12130	25-32	55	100 / 2,000



MADE IN AUSTRIA

Simply brilliant: the integrated nib on the interior side of the clip enables the conduit to tense between the two clips for easier cable insertion.

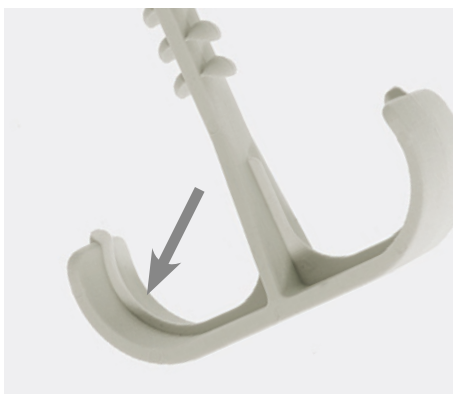
USD Recessed clamp double

For the simple laying of flexible conduits without plastering, on plasterboard, concrete and hollow brick, for laying two conduits.

Material halogen-free HO, PP, light grey, temperature range: -10 to +85 °C

* IEC / EN 61386-1:2008, IEC / EN 61386-25:2011 tested

Type	Article number	Clamping range conduit dimension mm	Dowel length mm	Content Pack/Box
Concrete	USD 16-20/25 HO*	16-20	25	200 / 4,800
	USD 20-25/25 HO*	20-25	25	100 / 3,200
	USD 25-32/25 HO*	25-32	25	100 / 1,600
Hollow brick	USD 16-20/55 HO	16-20	55	100 / 3,200
	USD 20-25/55 HO	20-25	55	100 / 2,400
	USD 25-32/55 HO	25-32	55	100 / 1,600



MADE IN AUSTRIA

Two conduits are mounted at the same time with the USD with just one borehole.

Thanks to the integrated nib on the interior clip side, the conduit can be tensed for easier cable insertion.

Surface- and recessed installation / installation in drywall

Recessed clamps for conduits · Clips and fastening elements for drywall

USA Automatic recessed clamp

For the simple laying of flexible conduits without plastering, on plasterboard, concrete and hollow brick.

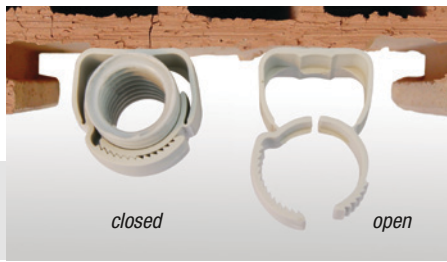
Material halogen-free HO, PP, temperature range: -10 to +85 °C

* IEC / EN 61386-1:2008, IEC / EN 61386-25:2011 tested

	Type	Article number	Clamping range conduit dimension mm	Dowel length mm	Content Pack/Box
Plasterboard	USA 16-20/11 HO *	12330	16-20	11 **	100 / 3,200
	USA 20-25/11 HO *	12340	20-25	11 **	100 / 2,400
	USA 25-32/11 HO *	12350	25-32	11 **	50 / 1,200
Concrete Plasterboard	USA 16-20/25 HO *	12430	16-20	25 ***	100 / 3,200
	USA 20-25/25 HO *	12440	20-25	25 ***	100 / 2,200
	USA 25-32/25 HO *	12450	25-32	25 ***	100 / 1,200
Hollow brick	USA 32-42/25 HO *	12640	32-42	25 ***	50 / 700
	USA 16-20/55 HO *	12530	16-20	55	100 / 2,400
	USA 20-25/55 HO *	12540	20-25	55	100 / 1,600
	USA 25-32/55 HO *	12550	25-32	55	50 / 1,000
	USA 32-42/55 HO	12650	32-42	55	50 / 600

** for laying in drywalls up to 12.5 mm thick; the outer side of the wall remains undamaged.

*** for laying in drywalls up to 30 mm thick and on gypsum fibreboard; the outer side of the wall remains undamaged.



An innovative product for sub-plaster mounting – the USA Recessed clamp automatic. A quick press is enough to affix the clamp to the conduit.

ESD Euro-fastening anchor

You can fix a bundle of cables on the ESD with a cable tie.

Material halogen-free HO, PA 6, UV-stabilised, temperature range: -20 to +85 °C

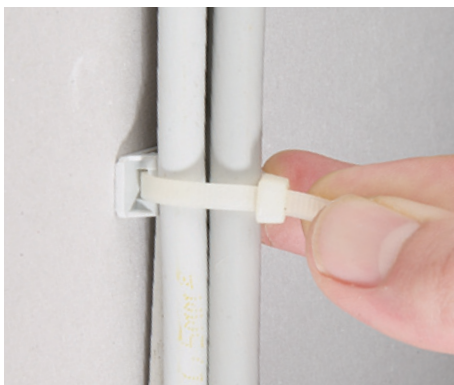
IEC / EN 61386-1:2008, IEC / EN 61386-25:2011 tested

Cable tie feedthrough up to max. 4.5 mm, cable ties not included.

Type	Article number			Length mm	Content Pack/Box
	light grey	grey	black		
ESD 11 HO	31280			11 *	200 / 10,800
ESD 30 HO	31300	31301	31304	27 **	100 / 4,800

* for laying in drywalls up to 12.5 mm thick; the outer side of the wall remains undamaged.

** for laying in drywalls up to 30 mm thick and on gypsum fibreboard; the outer side of the wall remains undamaged.



A cable-tie and an ESD are sufficient to fix a bundle of cables.



Installation in drywall

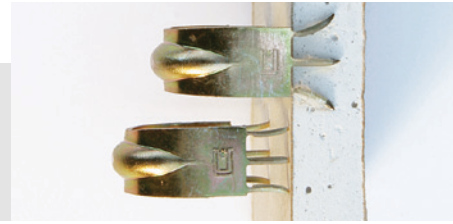
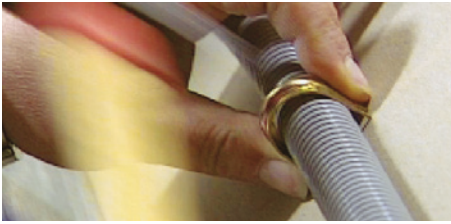
Clips and fastening elements for drywall

CF C-Fix for impact mounting

For mounting conduits to the inner side of drywalls.

Material chromed steel. All given torque values are average values. Different influences such as moisture, etc. can cause considerable deviations.

Type	Article number	Conduit Ø mm	Torque values	Content Pack/Box
CF 16	9116	16	11 kg	100 / 3,200
CF 20	9120	20	10 kg	75 / 2,400
CF 25	9125	25	9 kg	50 / 1,600



With C-Fix, conduits can be mounted to drywalls easily without drilling. The unique shape ensures a firm grip and leaves the outer wall undamaged. The C-Fix fits perfectly for hammer-fastening on drywalls from Rigips and Knauf.

PD Board anchor for drywall and woodwool slaps

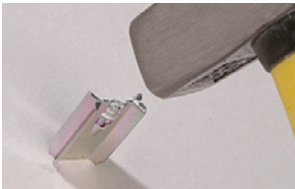
For the attachment of electrical equipment to plasterboard and woodwool slaps.

Material spring bend steel galvanized.

Product contains no relevant material in terms of REACH-regulation EC (No 1907/2006)

Type	Article number	Screw Ø mm	Length mm	Torque values	Content Pack/Box
PD 1	9080	3.5–4.5	30	40 kg	100 / 5,000
PD 2	9082	3.5–4.5	43	40 kg	100 / 3,000

All torque values are average values and may differ due to different influences. For example, material and humidity. Recommended screws: 3.5–4 mm Ø, screws not included in delivery package.



Using the PD Board anchor to attach the EC Euro-Clip easily in drywall and even on woodwool slaps. The PD Board anchor fits perfectly for hammer-fastening on drywalls from Rigips and Knauf.

SBA Schnabl drill stop

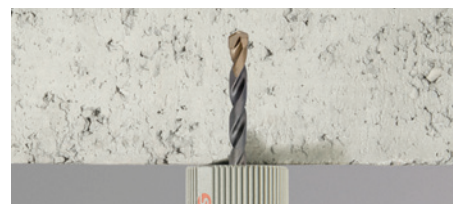
For the exact drilled depth in drywall.

Material Polyamid PA 6, glass fibre reinforced

Type	Article number	Drill Ø mm	Outer Ø mm	Colour
SBA	32905	6	30	grey-red



Ideal for mounting in drywall: the SBA reliably prevents the drywall from being drilled through. With the SBA Schnabl drill stop you easily can set the drill depth.



With the SBA Schnabl drill stop you easily can set the drill depth in concrete. So you can save a lot of your working time.



Special applications

Fastenings on insulated ceilings and walls

DHI Insulation fixing

For the simple mounting of electrical equipment. The DHI is used to fasten clips, junction boxes and light cable trays, on insulated ceilings and walls.

Material halogen-free HO, PA 6, light grey, UV-stabilised, temperature range: -20 °C to +85 °C

Type	Article number	Insulation thickness cm	Total length cm	Disc Ø cm	Content Box
DHI 8 HO	31510	3-4	8	6	225
DHI 10 HO	31530	4-6	10	6	175
DHI 13 HO	31550	6-8	13	6	150
DHI 15 HO	31570	8-10	15	6	125
DHI 17 HO	31590	10-14	17.5	6	75
DHI 21 HO	31600	16	21	5	120
DHI 25 HO	31610	15-20	25	5	75
DHI 30 HO	31630	20-25	30	5	75
DHI 35 HO	31650	25-30	35	5	70

Assembly instructions: minimum setting depth in the stable subsurface = 45 mm

Drilling diameter = 10 mm. Minimum drilling depth = overall length DHI + 10 mm - Insulation thickness

Recommended screws: Steel sheeting- or chipboard screws 4 mm, screw-in depth in DHI = 10-15 mm.



With the DHI Insulation fixing, you don't just mount the insulation but also the electricity supply, regardless of whether for conduit or cable installation.

Accessories for conduit clips

GTH Basket tray holder

Easy and cost effective solution for mounting conduits and junction boxes on cable trays.

Material galvanised

Type	Article number	Content Pack/Box
GTH	9001	50 / 1,600



Incredibly easy appliance! The GTH Basket tray holder for the time-saving mounting of conduits and junction boxes on basket trays.

Special applications

Mounting of junction boxes · Fixing conduits to wire mesh in concrete ceilings

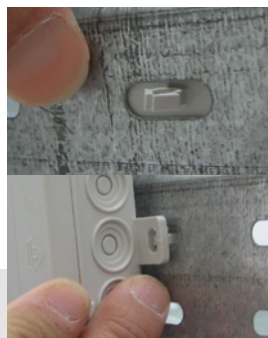
SDC Schnabl distribution box clip

Save time and energy when installing junction boxes onto cable trays.

Material halogen-free HO, POM, UV-stabilised, temperature range: -20 to +100 °C

Type	Article number	Colour	Content Pack/Box
SDC HO	31450	light grey	200 / 3,000

SDC offers a timesaving and effort-saving installation of junction boxes onto cable trays.



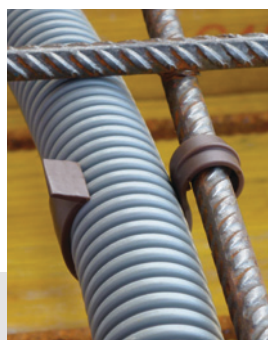
SBC Schnabl wire mesh clip

To fix conduits to wire mesh in concrete ceilings.

Material halogen-free HO, PP regranulat, brown, silicon-free, temperature range: -10 °C bis +85 °C

Type	Article number	Conduit dimension mm	Wire dimension mm	Content Box
SBC HO	34238	20 and 25	12	500

The conduit is pushed into the big opening, with the small opening attached to the wire. Fixings in the small opening prevent the clip from sliding.



Special solution for recessed installation

UPD Flush socket cover and accessories

For an easy finding of the flush socket after plastering.

Type	Article number	Content Box
UPD	12100	100

The core drill secures a clean drill-out of the flush socket cover. Spring hook for removing the flush socket cover.

Type	Article number
Core drill	12108
Spring hook	12109



Drilling in hollow building blocks, ceramic tiles, glass

LB Lance drill

For the exact hole in hollow bricks, tiles and earthenware.

Type	Article number	Drill Ø mm	Shaft length mm
LB 6/100	9095	6	100
LB 6/150	9097	6	150
LB 8/160	9099	8	160
LB 10/160	9101	10	160
LB 10/250	9103	10	250



The LB Lance drill is also ideal for tiling and ceramics. Even professionals who use the lance drill don't go back.

Tips and Tricks

Drilling into different building materials

With the right tool, any mounting goes much quicker!



Breaking loads and installation spacing

Schnabl products in detail

The breaking loads of the Schnabl products:

Average values of the torque test of the TU Graz and the institute TGM Kunststofftechnik.
The following table shows the average values of the tests carried out in July and August 2009 (all details in Newton):

Subsurface/product	Concrete	Full brick	Hollow bric ¹⁾ (Porotherm)	Aerated concrete ²⁾	Plasterboard ²⁾ 15 mm	Plasterboard 25 mm	Woodwool slaps
ESD 30	359.00	325.50	335.70	151.30		225.60	
AKS 20	391.30	341.90	245.20	151.30			
AKS 25	504.40	404.30	387.20	187.10			
KB 10	343.70	331.00					
SH 15	292.80	282.20					
SH 30	272.20	311.10					
USA 20–25/25	241.40	210.20	234.70	106.60		191.20	
USE 20–25/25			223.40	233.10			
CF 20					119.60	169.00	
CF 25					128.00	168.00	
PD 1					459.50	933.10	115.70
PD 2					446.90	1,227.00	210.70
DKS 3–13	248.00	271.80					
DHI 15 ³⁾	780.60	828.70	707.80	378.70			
DSN 30	340.00	330.00	310.00	75.00		85.00	
TA 100/25	369.00	374.00	365.20	148.10			
MDSN	250.00						

¹⁾ In this material drilling was done without “percussion” (with 6 mm lance drill)

²⁾ In these materials drilling was done without “percussion” (with 6 mm iron drill)

³⁾ Assembly instructions: minimum setting depth in the stable subsurface = 45 mm. drilling diameter = 10 mm. minimum drilling depth = overall length DHI + 10 mm

The torque values given are breaking loads in which the fastening tears or the fastening shaft has been pulled out of the borehole.
The required safety factor must be observed based on the particular use.

Recommended installation spacing

Attachment points for SH for **vertical installation** of sheathed cables NYM 3 x 1.5 mm² at a distance of 50 cm to max. 70 cm, for KB and TB at a distance of 60 cm to max. 80 cm. For cables with smaller diameter we recommend a shorter laying the corresponding distance. For longer lines, is to provide a suitable strain relief. Fastening points when laid **horizontally** sheathed cables NYM 3 x 1.5 mm² at a distance of 50 cm to max. 70 cm.

You can find the general terms and conditions of Schnabl Stecktechnik GmbH on the Internet at www.schnabl.works/de/schnabl-agb-international

Legal notice: Schnabl Stecktechnik GmbH · Bahnhofplatz 1 · Po box 63 · 3100 St. Polten · Austria · Telephone +43 2742 221 67-0 · Fax +43 2742 221 67-50 · office@schnabl.works · www.schnabl.works
Design: Werbeagentur Arno Brandauer, www.arno-brandauer.at · Photos: Stefan Ziller · Print and written errors reserved. Issue 01/2018.

Schnabl products at a glance

Once you've worked with them you'll never go back

Conduit installation

EC	Euro-Clip	Page 4
SC	Clip for shooting	Page 4
UVB	Universal clamping bracket	Page 5
FC	Flexi-Clip™	Page 5
ESD	Euro fastening anchor	Page 6
EDV	Euro twist-on connection	Page 6
ESV	Euro connector lock	Page 7
SGC	Schnabl thread clip	Page 7
ECV	Euro clip connector	Page 8
ESP	Euro shooting plate	Page 8
EKP	Euro adhesive pad	Page 8
AKS	Distance gripper clamp	Page 9
RK	Conduit claw	Page 9
ESS	Single fastening clamp	Page 10
DSS	Double fastening clamp	Page 10
DSA	Double fastening clamp	Page 10



Cable installation

DKS	Dowel clamp	Page 11
FS	Fixing mounting base	Page 11
DSS	Double fastening clamp	Page 12
DSN	Dowel fastening nail	Page 12
SD	Plug-in dowel nail	Page 12
MDSN	Metal dowel fastening nail	Page 13
MND	Ceiling nail	Page 13
Setting tool	Setting tool for MND	Page 13
KB	Cable bracket	Page 14
KBS	Cable bracket for shooting/drilling	Page 14
SH	Cable holder	Page 15
SHS	Cable holder for screws	Page 15



Surface- and recessed installation

TAP	Support anchor panel	Page 16
TA	Support anchor	Page 16
TB	Terrace bracket	Page 16
USE	Recessed clamp single	Page 17
USD	Recessed clamp double	Page 17
USA	Recessed clamp autom.	Page 18



Installation in drywall

USA	Recessed clamp autom.	Page 18
ESD	Euro fastening anchor	Page 18
CF	C-Fix	Page 19
PD	Board anchor	Page 19
SBA	Schnabl drill stop	Page 19



On insulations

DHI	Insulation fixing	Page 20
------------	-------------------	---------

Mounting on cable trays

GTH	Basket tray holder	Page 20
------------	--------------------	---------

Mounting of junction boxes

SDC	Schnabl distribution box clip	Page 21
------------	-------------------------------	---------

In concrete ceilings

SBC	Schnabl wire mesh clip	Page 21
------------	------------------------	---------

Special solution for recessed installation

UPD	Flush socket cover	Page 21
------------	--------------------	---------

Drilling in hollow building blocks, ceramic tiles, glass

LB	Lance drill	Page 21
-----------	-------------	---------





Schnabl Stecktechnik GmbH
Bahnhofplatz 1, po box 63, 3100 St. Pölten, Austria
Telephone +43 2742 22167-0, Fax +43 2742 22167-50
office@schnabl.works, www.schnabl.works